

Cheshire West & Chester Council

Museums, Exhibitions & Events

June - September 2019



GROSVENOR
MUSEUM



Chester
HISTORY
& HERITAGE



Stretton
WATERMILL



WEAVER HALL
Museum & Workhouse



LION
SALT
WORKS



**WEST CHESHIRE
MUSEUMS**



Cheshire West
and Chester

Grosvenor Museum, Chester

27 Grosvenor Street, Chester, CH1 2DD

Located in England's most picturesque city, the Grosvenor Museum's nationally important collections celebrate Chester's cultural heritage. The Roman galleries explore life in the Roman fortress of Deva and display the largest group of inscribed and sculpted Roman stones from a single site in Britain. The paintings and sculpture in the Art Gallery span half a millennium of art in Cheshire, while the Silver Gallery presents the definitive collection of Chester silver. Nine period rooms illustrate changing fashions in domestic interiors from the 17th century to the 1920s. Further galleries explore Cheshire's diverse natural history and present a range of temporary exhibitions.



All change in the Museum Shop

We are creating a brighter and fresher look in the Shop this summer, and will eventually be selling design-led pieces by craftspeople near and far alongside our usual stock. As part of this change, the Shop and Period House will be closed from 17-23 June.

Admission free - donations welcome

Monday – Saturday 10.30am-5pm, Sunday 1-4pm.

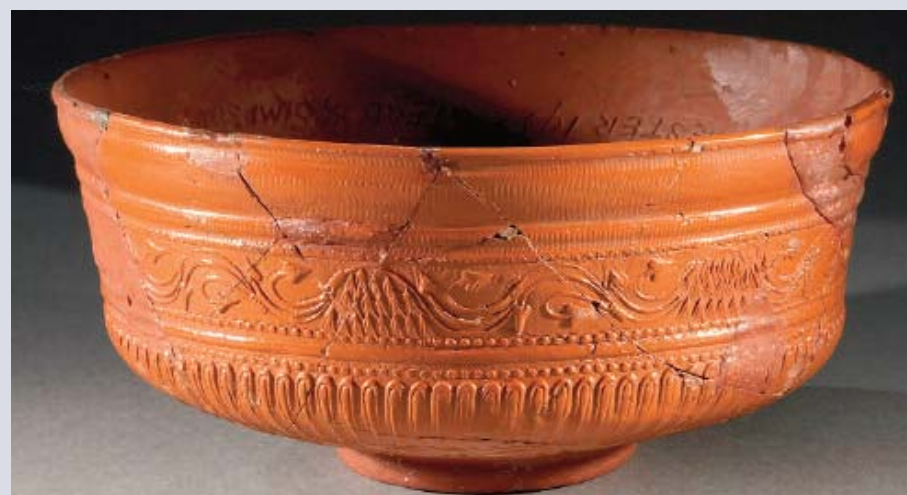


Telephone 01244 972197

Find us on Facebook: Grosvenor Museum and Stretton Watermill

Follow us on Twitter @cwacmuseums

Website: www.westcheshiremuseums.co.uk



Support us

The Grosvenor Museum Society provides vital support for the museum. Members of the society enjoy a full and varied programme of events, including lectures and outings. See www.grosvenor-museum-society.co.uk.

Volunteers

Please see all West Cheshire Museums volunteering roles on the website www.westcheshiremuseums.co.uk

Disabled access

Wheelchair access to the ground floor, including Exhibition Gallery One, Lecture Theatre and accessible toilet. No lift to Art Gallery, Costume Gallery or Exhibition Gallery Two on first floor.

Exhibitions

Grosvenor Museum, Chester

2 March – 2 June

David Ferry: The Invader's Guide to the Museum (and other places)

**Exhibition Gallery Two and
throughout the museum**

Tourists and hobbyists rely on helpful guides. Picture books on travel, history, gardening, cooking, knitting and DIY have provided David Ferry with material for his collages that explore our national heritage. Museums likewise serve as repositories of a shared culture. Arranged and re-arranged, their contents can tell different stories. Alongside an exhibition of his prints and books, Ferry gives his own interpretation of the Grosvenor Museum's collection through selected interventions. Guest-curated by Stephen Clarke, University of Chester.

Until 7 July

Unexpected Elegance: Female Fashion from the 1970s

Costume Gallery

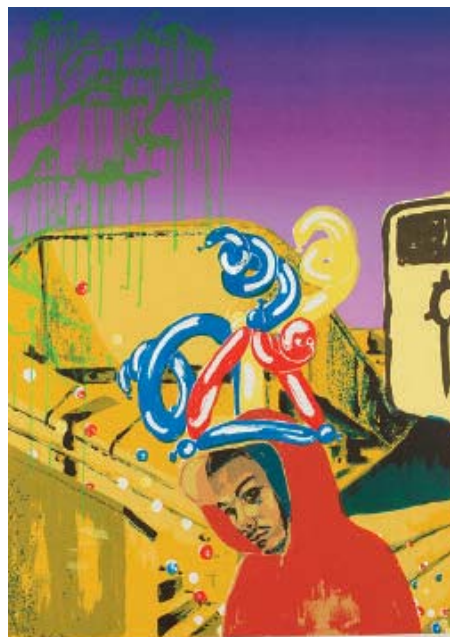
The 1970s are often called 'the decade that taste forgot', but the dresses in this small exhibition show that this was far from true. From minis to midis and maxis, in fabrics ranging from cotton and corduroy to polyester and fake leopard-skin, with designs by Ossie Clark, Givenchy and Zandra Rhodes, we celebrate some of the more subtle pleasures of 1970s fashion.



Until 18 September

The Grosvenor Museum's 13th Open Art Exhibition

Exhibition Gallery One



Discover the wealth of local creative talent in this diverse and stimulating exhibition, selected from hundreds of entries in open competition. Enjoy a kaleidoscope of colours and styles, a wide range of techniques and materials, and a rich variety of subjects and moods. There will definitely be things you will love, and maybe a few you will hate: come and vote for your favourite!

Until 6 October

Going the Distance: 480 Years of Racing at the Roodee

Coin Gallery

Once likened to racing on 'green velvet' by jockey Lester Piggott, Chester's hallowed Roodee turf is uniquely positioned at the heart of the city. As the racecourse celebrates another milestone in its illustrious history, this exhibition presents objects and images from the Chester Race Company and the Grosvenor Museum to explore the origins and heritage of the oldest racecourse still in operation in Great Britain, if not the world.



CHESTER RACE
COMPANY LTD.

Exhibitions

Grosvenor Museum, Chester

Until 10 December

Charles Kingsley: Christian Socialist and Natural Historian

Chester Cathedral Library

Open by appointment with George Brooke on 01244 351432 or george.brooke@manchester.ac.uk. No wheelchair access.

This exhibition marks the 200th anniversary of the birth of Charles Kingsley (1819-1875). It explores his activities as a social reformer, notably his interests in sanitation and clean water and, as reflected in his children's novel *The Water-Babies*, his campaign against the use of child chimney sweeps. The exhibition also examines Kingsley as a natural historian and associate of Charles Darwin. He became a canon of Chester Cathedral in 1869 and established the Chester Society of Natural Science, which led to the founding of the Grosvenor Museum.

8 June – 1 September

WonderFull: Unseen Marvels from the Museum Stores

Exhibition Gallery Two

From a dress that might have poisoned its wearer, to an olive leaf from the Garden of Gethsemane, the museum stores contain some quirky objects which have rarely or never been displayed before. This exhibition showcases these wonders in the tradition of the earliest museums – the cabinet of curiosities – that collected together a varied assortment of intellectually stimulating items.



13 July – 17 January

Curated Closet

Costume Gallery



This small exhibition showcases costumes inspired by objects from the Grosvenor Museum collections, made by West Cheshire College Fashion and Design students under the expert guidance of local fashion designer Matthew O'Brien and photographer Kat Hannon of the *Cheshire Magazine*.

7 September – 8 December

Louise Rayner: Victorian Watercolours

Exhibition Gallery Two

The much-loved watercolours of Louise Rayner (1832-1924) present a uniquely charming vision of Victorian Chester. She delighted in the textures of crumbling plaster, weather-beaten timber, peeling posters and rough cobbles. Her views of Chester's picturesque streets are brought vividly to life with ordinary people going about their daily lives in the sunlit city. Louise Rayner came from a family of artists, and the exhibition includes watercolours by her father Samuel and sister Margaret.



Children's activities are aimed at 4 to 12 years unless otherwise stated. Children must be accompanied by an adult. Please contact the Museum Shop 01244 972112 for group bookings.

West Cheshire Museums Exhibitions and Events 05

Family Events

Grosvenor Museum, Chester

Until 31 May

Grosvenor Park Archaeological Excavation

Grosvenor Park

Cheshire West and Chester Council's archaeologists, in partnership with the University of Chester, are running their annual training excavation for 2nd year archaeology students in Grosvenor Park. Visitors are welcome, and the students are on hand during weekdays (except Bank Holidays), to tell you about the park's Roman and medieval archaeology.

Saturday 25 May

Chester Heritage Festival Launch: Roman Day

Chester Racecourse

11.30am-6pm.

This year's Heritage Festival will be launched at the family-friendly Roman Day on Britain's oldest racecourse. Youngsters can learn fascinating facts about their Cestrian ancestors and witness spectacular sporting displays both on and off the track. The Grosvenor Museum's Youth Panel has created an exciting life-size board game for families to enjoy. Chester Racecourse, the event sponsor, is giving Chester residents in postcodes CH1-CH4, and holders of this brochure, a half-price discount when tickets are purchased in person at the Chester Racecourse Box Office: for terms and conditions visit www.chester-races.com/romanday.



CHESTER RACE
COMPANY LTD.

Tuesday 28 May

Silly Storybooks

Newstead Gallery

12.30-2.30pm, drop-in. £2.



David Ferry makes surreal books by sticking pictures from one type of book onto the pages of another. Come and make your own little book filled with pictures you've chosen and cut out of magazines, and write a story to go with the pictures.

Wednesday 29 May

The Terrific Triassic

Newstead Gallery

12.30-2.30pm, drop-in. £2.



A strange alien creature wends its way across a barren scarlet desert ... welcome to Cheshire in the Terrific Triassic era! Check out some of the weird creatures and habitats of the era, and experiment to discover how that distant past has shaped our present.

Wednesday 29 May

Grosvenor Park Archaeological Excavation: Open Afternoon

Grosvenor Park

1-4.30pm, drop-in. Free.

Come and see what the University of Chester's archaeology students have discovered this year in Grosvenor Park, with site tours and a display of objects found by the students.



Thursday 30 May

Cupcakes!

Newstead Gallery

12.30-2.30pm, drop-in. £2.

Inspired by the cakes in David Ferry's book *Cake Walking in Scotland*, decorate – and eat! – some cupcakes.



Family Events

Grosvenor Museum, Chester

**Fridays 7 June, 5 July, 2 August,
6 September**

Grosvenor Museum 'Quiet' Afternoons

3-4.30pm, drop-in.

Suggested donation £2.

For those who enjoy a 'quieter' visit to the museum, including people living with autism, their families and carers. Our 'quiet' afternoons are themed, with hands-on activities to engage all ages and abilities. Pre-visit orientation pack available on request from Virginia Kettle on 01244 972120 or virginia.kettle@cheshirewestandchester.gov.uk.

Mondays 17 June & 15 July

Museum Explorers

Natural Cheshire Gallery

Arrive 9.50am for 10-11am.

Free, suggested donation £2.



Especially for ages 2-4, although younger siblings are also welcome. Come and explore nature's changing seasons and discover lots of exciting things from the past through play, crafts, stories and songs.

Friday 21 – Saturday 29 June

Chester Heritage Festival: Telling the story of our city and its people



Over 60 events put the spotlight on Chester's 2000-year history and heritage. Walks, talks, performances, exhibitions, storytelling, special activities for young people, and the Midsummer Watch Parades, come together to bring Chester and its heritage to life. The streets, the Rows, the Walls, the waterways, and historic buildings provide the backdrop for our stories to be told. Resident or visitor, young or old, come and celebrate Chester's heritage. Details of all festival events on www.visitcheshire.com/chesterheritagefestival.



Saturday 22 June

River Dee Activities with the Youth Panel

Newstead Gallery in Grosvenor Museum, and Bandstand at The Groves



11.30am-1pm, Newstead Gallery, drop-in. Free.

4-5pm, Bandstand, drop-in. Free.

The Grosvenor Museum's Youth Panel celebrates the story of the River Dee and its rich heritage with family activities exploring different periods in the river's history.

Saturday 22 & Sunday 23 June

Midsummer Watch Parades

Starts from Town Hall Square

2pm. Free.



Chester's famous Midsummer Watch first took place in 1498, and still today dragons, angels and devils make an annual appearance on the city's streets. Come and join one of the oldest and most colourful parades in Britain.

Family Events

Grosvenor Museum, Chester

Tuesday 25 – Thursday 27 June

Archaeology in Grosvenor Park

Grosvenor Park Activity Zone

Tuesday & Wednesday 9.30-5pm, Thursday 1-5pm, drop-in. Free. Cheshire West and Chester Council's archaeologists, in partnership with the University of Chester, ran their annual training excavation for archaeology students in Grosvenor Park in May. During June and July the archaeologists will be cleaning the finds from the dig in the park's Activity Zone. Come and see what we are doing during the Chester Heritage Festival.



Saturday 29 & Sunday 30 June
Chester ArchFest

Newstead Gallery & Stones Gallery

Saturday 10.30-5, Sunday 1-4, drop-in. Free.

Join museum archaeologists, local societies, re-enactors and field archaeologists for a fun-packed weekend full of tours, demonstrations, displays and archaeological activities. Please see the museum website and social media for more details.

Thursday 25 July
Festival of British Archaeology

Grosvenor Park Activity Zone
1-5pm, drop-in. Free.



Come and see what the archaeologists have found during the annual excavation that has been taking place in Grosvenor Park since 2007. There will be displays of finds and information about the discoveries – a Roman road, a medieval stone building, and lots more. Plus information about local archaeology and a chance to talk to the archaeologists about their work and discoveries.

Wednesday 31 July

Make a Rainbow

Newstead Gallery

1.30-3.30pm, drop-in. £2.

Come and create a piece of rainbow using cellophane and laminated plastic. The pieces will be joined together to create a complete rainbow, which will hang from our first floor landing for a few weeks.

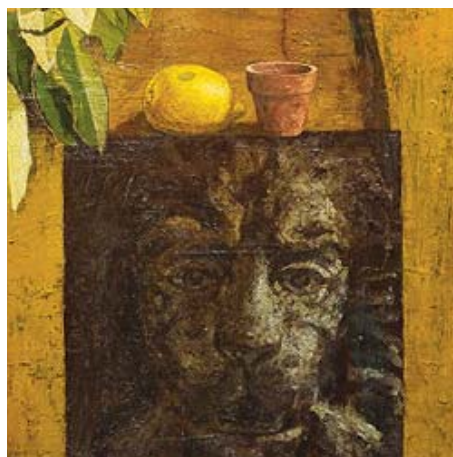


Thursday 1 August
Make your own Masterpiece

Newstead Gallery

1.30-3.30pm, drop-in. £2.

Take inspiration from our Open Art Exhibition and create your own masterpiece to take home.



Tuesday 30 July
Lion Masks

Newstead Gallery

1.30-3.30pm, drop-in. £2.

Using the stone carving in the museum's portrait of Prince Charles as inspiration, create your own mask to take home.



Family Events

Grosvenor Museum, Chester

Tuesday 6 August Hobby Horses

Newstead Gallery

1.30-3.30pm, drop-in. £2.

Chester is well known for its racecourse and love of horses. Join us and make your own horse to race on.



Wednesday 7 August Race Day Hats

Newstead Gallery

1.30-3.30pm, drop-in. £2.

Royal Ascot is a five-day programme of horse races held near Windsor Castle. Spectators often wear highly decorated hats, and sometimes the hats are more photographed than the horses! Make and decorate your own stylish race day hat.

Thursday 8 August Sock Horse Polo

Newstead Gallery

1.30-3.30pm, drop-in. £2.

Prince Charles used to love playing polo, so make a horse out of an old sock and cardboard tube and take part in a polo game in the gallery.



Tuesday 13 August Victorian Parasols

Newstead Gallery

1.30-3.30pm, drop-in. £2.

Make a large fixed paper parasol and decorate it with lace, just as the Victorians liked to ornament their parasols.



Wednesday 14 August Shiny Beetle Bags

Newstead Gallery

1.30-3.30pm, drop-in. £2.



Take inspiration from our *WonderFull* exhibition and make your own iridescent bag to take home.

Thursday 15 August Cuneiform Tablets

Newstead Gallery

1.30-3.30pm, drop-in. £2.

Cuneiform is one of the earliest systems of writing and dates from the fourth millennium BC in Mesopotamia (modern Iraq). Come and make your own clay tablet with your name on it in cuneiform!



Tuesday 20 August Coats of Arms

Newstead Gallery

1.30-3.30pm, drop-in. £2.

The museum's portrait of Prince Charles is full of symbolism. Learn about the different meanings behind colours, symbols and animals in coats of arms, and design a shield for your own family.



Family Events

Grosvenor Museum, Chester

Wednesday 21 August Family Photographs

Newstead Gallery

1.30-3.30pm, drop-in. £2.

What clothes would you have worn for a family photograph 100 years ago? Dress your family in our colourful range of handling costumes and accessories. Take a family photo on your own camera/mobile phone, then make and decorate your own photo frame to take home.



Thursday 22 August 3D Family Tree

Newstead Gallery

1.30-3.30pm, drop-in. £2.

Pop along and make your very three-dimensional family tree to fill with beautiful pictures of your family and other special people in your life.

Tuesday 27 August Sustainable Living

Newstead Gallery

1.30-3.30pm, drop-in. £2.



Prince Charles is very interested in sustainability, so help to make a sustainable village out of recycled materials for display in our foyer case. We'll look at how we might use renewable energy, recycle materials and grow our own food to minimise human impact on the planet.

Wednesday 28 August Miniature Gardens

Newstead Gallery

1.30-3.30pm, drop-in. £2.



Prince Charles is a very keen gardener, so to celebrate our new portrait of him, make your own little garden with real plants to take home and grow.

Thursday 29 August Rainforest Animals

Newstead Gallery

1.30-3.30pm, drop-in. £2.

Prince Charles's Rainforest Project looks at the effects of climate change and deforestation. Using the colours in his portrait as inspiration, make a collage showing rainforest life, with animals, plants and birds.



Saturday 14 September Heritage Open Days: Family Tree Activity

Newstead Gallery

1.30-3.30pm, drop-in. Free.

Pop along and make your very three-dimensional family tree to fill with beautiful pictures of your family and other special people in your life.



Adult Events

Grosvenor Museum, Chester

Every day of the year

Guided Walking Tours of Chester with the Guild of Chester Tour Guides

Meet at the Visitor Information Centre, Town Hall Square

10.30am-12noon & 2-3.30pm. £8, £7 concessions, tickets from guide on the day.

www.chestertours.org.uk.

Your guide will lead you on a captivating journey through 2,000 years of history, taking in all the main sites along the way, including the Rows, Walls, River and the exterior of the Cathedral. Discover Chester's rich heritage, beginning in Roman times, through the vibrant period of medieval expansion, the desperation of the Civil War, Georgian elegance and Victorian revival, right up to the present day.



Wednesday 29 May

North Wales's Civil War: there's a war on, but where's the fighting?

Lecture Theatre

1-2pm. £3, pay at the door.



Professor Peter Gaunt looks at the standing and nature of royalism in northern and mid Wales during the civil war of 1642-46. He examines the experience of the war there and explores how parliament and parliamentary generals based in neighbouring Cheshire and Shropshire eventually managed to quell and overcome North Walian royalism.

A University of Chester event

Thursdays 30 May, 13 & 27 June, 11 & 25 July, 8 & 22 August, 5 & 19 September

Café Crafts

Museum Café

2-4pm. £3, including tea or coffee.

Join Tracey Todhunter, freelance knitwear designer and author of *Woman's Weekly Guide to Crochet*, for an afternoon of craft and chat in our 1940s café. Bring along your own project or feel free to join in with one of ours. Everyone is welcome – whether you're a master or a beginner, Tracey will be on hand to help.

Wednesday 26 June

The River Dee: A Journey through the Records

Cheshire Record Office, Duke Street

5-6.30pm, drop-in. Free.

Experts will be on hand to help you navigate the unique records that tell the story of Chester and its river. See the charter from 1354 which confirms that Chester's Mayor is also Admiral of the Dee. Explore the evidence for the importance of the Port of Chester and the struggle to keep the river open to shipping. On to more recent times, where you can enjoy the floating baths and spectacular Victorian Dee illuminations!

Friday 28 & Saturday 29 June Chester Archaeological Society Conference

Lecture Theatre

9am-5pm. To book, send a cheque for £18, payable to Chester Archaeological Society, to Ian Candlin, 6 Fox Lane, Waverton, Chester CH3 7PQ.

Chester Archaeological Society celebrates its 170th anniversary this year. The conference will look back at some of the major projects undertaken by the Society over its long history, as well as looking forward. The built landscape of the city was changing in the middle of the 19th century as the population increased dramatically, and of course Chester's heritage is still a contentious issue today as sites are developed.



Adult Events

Grosvenor Museum, Chester

Friday 9 August

Toys and Games from Times Gone By

Museum Café

2-3.30pm, drop-in. £2.

Come and join us for a nostalgic look at the toys and games we played with as children. Refreshments available. This activity is aimed at older people, those living with dementia, their families and carers.



Tuesday 3 September
The Constant Flux:
New Thrills in
Contemporary Art.
A new lecture by
Adrian Sumner

Lecture Theatre

1.30-3pm. £3, pay at the door.

A fresh look at modernism and how contemporary art must change and change again to remain of-the-moment and relevant (not to mention financially appealing). Nodding to the great modernist movements as we go, we will examine the latest innovations, fascinations and developments in this area of change. Includes Jeff Koons, David Mach, Banksy, Jenny Saville, Peter Howson, and the rising tide of young artists, some of whom will join the big names on the wheel of fortune. As you see, this is also a Festival of Mixed Metaphors.

Saturday 7 September

Royal Chester Walk with the Guild of Chester Tour Guides

Meet Entrance Hall, Grosvenor Museum

2-3.30pm. £8, £7 concessions; book in advance at Museum Shop, 01244 972112; tickets from guide on the day.

Chester has long been known as a loyal and ancient city, with a townscape rich in references to royal connections and historic events. The Town Hall was opened by the then Prince of Wales in 1869, the Cathedral was a Benedictine monastery dedicated to the daughter of a Saxon king, and on emerging from Chester Railway Station we immediately see the Queen Hotel with a statue of Queen Victoria above its main entrance. Join a member of the Guild of Chester Tour Guides for a walk around royal Chester.



Wednesday 25 September

Art Gallery Tour

Art Gallery

2-3.15pm. Suggested donation £3.



Join Peter Boughton, the museum's Keeper of Art, to discover a rich array of paintings, sculpture and furniture spanning half a millennium of art. Highlights include a recently acquired portrait of HRH The Prince of Wales and Earl of Chester, painted by Tom Wood in 1989 (detail above). One of the most successful royal portraits of the 20th century, it captures – with insight and empathy – the sensitive, thoughtful and complex man who is destined to become our king. It was acquired with support from Art Fund, Philip Mould, Arts Council England/V&A Purchase Grant Fund, Tyrer Charitable Trust, Gerrard and Audrey Couch Charitable Trust, and Grosvenor Museum Society.

Corporate Partnerships at the Grosvenor Museum

Grosvenor Museum, Chester

We are delighted to welcome the Grosvenor Museum's founder Corporate Partners:

Gold Partner



Cheshire College
South & West



Silver Partner



CHESTER RACE
COMPANY LTD.

Bronze Partner



SYKES
HOLIDAY COTTAGES



As a Corporate Partner you and your business can show a real passion for social responsibility and enjoy a wide range of special benefits, including brand exposure to over 80,000 visitors every year and more online.

Membership benefits include:

- Free use of the iconic Victorian lecture theatre for meetings and corporate entertainment
- VIP invitations to private events and exhibition openings
- Sponsor an item on public display
- Enjoy exclusive gallery tours and access behind the scenes at the museum

To receive a Corporate Partnership Scheme information pack and to discuss sponsorship opportunities for your business, please contact

Richard Hall on 01244 972094 or
richard.hall2@cheshirewestandchester.gov.uk.

West Cheshire Museums are delighted to have been chosen to be part of Chester Race Company's Project 1000.

Chester History & Heritage

The History Hub @ The Grosvenor Museum, 27 Grosvenor Street, Chester, CH1 2DD

Visit Chester History & Heritage at The History Hub @ The Grosvenor Museum, with books, maps and photographic collections and our popular family history research service. Our wonderful Facebook and website pages are followed by well over 4,000 history lovers, and you can explore our online imagebank which boasts over 21,000 unique historic images of Chester.

Monday – Friday 10.30am-5pm. Closed Bank Holidays 27 May and 26 August

Telephone 01244 972115

Email: CHH@cheshirewestandchester.gov.uk

Find us on Facebook: Chester History and Heritage Centre

Follow us on Twitter @cwacmuseums

Website: www.westcheshiremuseums.co.uk



Stretton Watermill, Farndon

Mill Lane, Stretton, Farndon, SY14 7HS

Step back in time and visit one of the country's best preserved water-powered corn mills. First recorded in 1351, Stretton Watermill was a working mill until its last miller retired in 1959. Visit the 19th-century stable block to learn about the history of the mill and explore models of the building and its machinery. One of our millers will then take you on a fascinating tour to see the ancient wooden machinery in action, listen to stories, and have a go at milling grain. Bring a picnic and enjoy the idyllic rural setting with beautiful views of the pond and mill buildings.

Telephone 01606 271640
Find us on Facebook: Grosvenor Museum and Stretton Watermill
Follow us on Twitter @cwacmuseums
Website: www.westcheshiremuseums.co.uk

Volunteers

Please see all West Cheshire Museums volunteering roles on the website
www.westcheshiremuseums.co.uk

Disabled access

Accessible toilet, ramp to first floor of mill.



Admission

Cash only. Adult £3.50, child £1.80. Charges may rise during 2019.

May to August: Tuesday – Sunday and Bank Holiday Mondays 1-5pm.
September: Weekends 1-5pm.

Exhibition

20 May – 29 September
Crafting the Woods: Water and Wildlife

Crafters, young and old, have created a menagerie of creatures, flora and fauna to nestle in the magical woodland of Stretton for the summer: knitted ladybirds, felted foxes and turned toadstools have all been spotted here



Events

Sunday 23 June
Vintage Bikers

1-5pm, Free. Admission charge for mill.



Join the Cheshire Cat vintage bikers on their annual picnic. Talk to the enthusiasts and admire this splendid array of vintage motorbikes in the unique setting of Stretton Watermill.



Saturday 21 & Sunday 22 September

Victorian Harvest Weekend and Heritage Open Days

12noon-5pm. Free activities. Admission charge for mill.



Celebrate Heritage Open Days and the traditional harvest with apple pressing (bring your own), butter making, corn dollies, recipes, music, and 'the wonders of the bicycle'. This delightful end to the season captivates all who experience the romance of the mill.

Weaver Hall Museum & Workhouse

162 London Road, Northwich, CW9 8AB

Weaver Hall Museum and Workhouse is full of displays and tales of the history and industry of West Cheshire. The stories are told through films, reconstructions, models and vivid displays of intriguing artefacts, which relate to local industry, market towns, transport, archaeology, and the building's former history.

Housed within the old Northwich Union Workhouse, a special exhibition in the former workhouse schoolroom explores life for the paupers. Our younger visitors can dress up as workhouse inmates, learn all about the 3 Rs and challenge themselves with our workhouse quiz. Visitors can also find out about workhouse food, discover some of the people who lived in the workhouse, and visit the recreated Master's sitting room.

A regularly changing exhibition programme features local history subjects, artist groups, and fascinating items from our wider museum collections.



Admission

Adult £3.50, concession £2.50, child £1.80. Charges may rise during 2019. Other ticket options available. Free access to temporary exhibitions (donations welcome) and the coffee shop and gift shop.

Tuesday – Friday, school holiday Mondays, Bank Holiday Mondays
10am-5pm, Saturday & Sunday 2-5pm.



Telephone **01606 271640**

Find us on Facebook: **Weaver Hall Museum and Lion Salt Works**

Follow us on Twitter **@cwacmuseums**

Website: **www.westcheshiremuseums.co.uk**

Support us

The Friends of Weaver Hall offer vital support for the museum. Friends enjoy a full and varied programme of events including evening talks and film nights. See **www.fowhm.org.uk**.

Volunteers

Please see all West Cheshire Museums volunteering roles on the website **www.westcheshiremuseums.co.uk**

Disabled access

Wheelchair access is available throughout the museum.



Exhibitions & Family Events

Weaver Hall Museum & Workhouse, Northwich

Exhibitions

Until 9 June

Northwich

Photographic Society

An exhibition by local amateur photographers featuring images of the surrounding area. Northwich Photographic society holds regular meetings and exhibitions in the town.

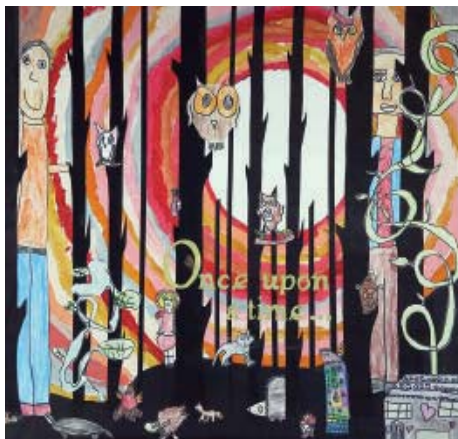


22 June – 1 September

Once Upon a Time

A selection of artwork created by local schools inspired by children's literature. This exhibition will feature work originally on display in Northwich shops earlier in the year for the Primary Schools' Art Trail.

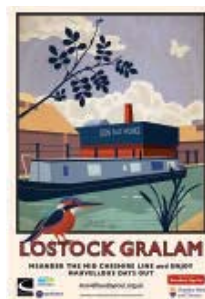
Presented in partnership with Visual Arts Cheshire



15 July – 18 August

Mid-Cheshire Line Posters

Back by popular demand, the fourteen iconic Marvellous Days Out posters from the Mid-Cheshire Line, which connects Chester with Manchester via Northwich, Knutsford, Altrincham and Stockport.



7 September – 28 September

Mid-Cheshire Suffragettes

A pop up display as part of Heritage Open Days featuring Elizabeth Wolstenholme Elmy, who for most of her campaigning life lived in Cheshire and championed higher education for women, birth control, and the Married Women's Property Act.



Family Events

Children's activities are aimed at 4 to 12 years unless otherwise stated. Children must be accompanied by an adult. Please contact 01606 271640 for group bookings.

Wednesday 29 & Thursday 30 May

Pop Bottle Rockets

10am-4pm, drop-in. £2 per child. 3-2-1 blast off! Back by popular demand! Make a rocket to launch in the museum grounds.

Saturday 13 July

Museum Family Sketch Crawl

2-4pm. Free, but booking essential on 01606 271640.

Join artist Ian Hill-Smith for a family afternoon of sketching around the museum. Suitable for ages 8 plus. Children must be accompanied by an adult.

Part of Northwich Arts Festival, supported by Visual Arts Cheshire

Wednesday 31 July & Thursday 1 August

Clay Monsters

10am-4pm, drop-in. £2 per child. Make a pet monster in clay to take home and paint later.

Wednesday 7 & Thursday 8 August

Medieval Village

10am-4pm, drop-in. £2 per child. Become lord or lady of the manor by creating your own three-dimensional Medieval village.



Wednesday 14 & Thursday 15 August

Masks

2-4pm, drop-in. £2 per child. Get creative in our museum craft room and make your own fabulous mask.

Family & Adult Events

Weaver Hall Museum & Workhouse, Northwich

Wednesday 21 & Thursday 22 August

Treasure Map

10am-4pm, drop-in. £2 per child.

Imagine you are a pirate with buried treasure to hide. Make a map to help you find it later. Then follow the museum map to find our treasure!



Friday 23 August Teddy Bears Picnic: Bug Hunt

12noon-4pm. Free.

Our annual Teddy Bears Picnic is back, this time with a bug theme. Bring your picnic to enjoy in the museum grounds, then go on a bug hunt, build a den, and make a bug house. We will also be prepared for whatever the weather with bug crafts and stories with our friends from Northwich Library and Chester Zoo. Suitable for all ages.



Wednesday 28 & Thursday 29 August

Viking Finds

10am-4pm, drop-in. £2 per child.

Meet a Viking, find out about life in the Dark Ages, and make some Viking artefacts.

Adult Events

Wednesday 29 May

Congleton: A Town of Surprises

3-4pm. £3, complimentary tea & coffee from 2.30pm.

This talk with Ian Doughty from Congleton Museum will uncover some of the town's quirkier historical facts. Discover how Congleton is connected to the death of Charles I, the imprisonment of Napoleon, the Bank of England, and the Representation of the People Act of 1918.



Fridays 31 May, 28 June, 26 July, 30 August, 27 September

Craft and Chat

10.30am-12.30pm. £3, including tea or coffee.

Meet like-minded crafters, learn a new skill, and enjoy a cup of tea in the relaxed setting of Weaver Hall Museum's café. There will be demonstrations and projects to work on. Suitable for all levels of experience.



Wednesday 12 June

Wallis Simpson

7.30-8.30pm. £5, book at www.northwichlitfest.co.uk.



Anne Sebba speaks about her book *That Woman: The Life of Wallis Simpson, Duchess of Windsor*. 'That woman', as she was referred to by the Queen Mother, became a hate figure for ensnaring a British king and destabilising the monarchy. Neither beautiful nor brilliant, she nevertheless became one of the most talked about women of her generation, and she inspired such adoration in Edward VIII that he gave up a throne and an empire for her. A Northwich Lit Fest event

Thursday 20 June

Evening of Poetry, hosted by Angela Topping

7-9pm. £5, book at www.northwichlitfest.co.uk.

The headline musician is the acclaimed Gordon Tyrrell, professional folk musician from Leeds, on guitar and vocals. The headline poet is Brian Wake, well known on the Liverpool scene. Come along and share a poem or a song in the open floor, or sit back and listen.

A Northwich LitFest event



Adult Events

Weaver Hall Museum & Workhouse, Northwich

Wednesday 26 June Dementia-Friendly Museums

3-4pm. £3, complimentary tea & coffee from 2.30pm.

For the past five years Virginia Kettle, a Learning Assistant at the Grosvenor Museum, has been involved in planning and delivering dementia-inclusive workshops at the museum and in local care homes. She uses the museum's collection of handling objects to encourage conversation and memories. Virginia will talk about the joys (and the challenges!) of working with people living with dementia, and will bring along some artefacts from the handling collection.



Thursday 4 July Evening Urban Sketch Crawl

6-8pm. Free, booking essential on 01606 271640.

Led by local artist Ian Hill-Smith, spend an evening sketching in Northwich town centre. Suitable for all levels of experience.

*Part of Northwich Arts Festival,
supported by Visual Arts Cheshire*



Saturday 21 July Urban Sketch Crawl

10am-3pm. Free, booking essential on 01606 271640.

Join local artist Ron Stephens for a morning sketching in the town centre and an afternoon at the museum. Suitable for all levels of experience.

*Part of Northwich Arts Festival,
supported by Visual Arts Cheshire*

Saturday 7 September Urban Photography Workshop with Derek Randall

11am-4pm. £20, book at www.derekrandallphotography.com workshops.

Discover techniques for capturing the fast moving, ever changing urban environment. This workshop will take place in Northwich town centre and Weaver Hall Museum. Suitable for all levels of ability and equipment including your camera phone.



Saturday 14 September World War II Re-enactors Day

2-4pm. Normal admission charges. Visit our historical re-enactors and discover what life was like for soldiers, sailors, airmen and civilians on the Home Front during the Second World War.

Saturday 14 September Vintage Evening Dance

7-10pm. £8, tickets available at the museum or www.eventbrite.co.uk.

An evening of waltzes, the Lindy hop and even the hokey cokey. Come and dance the night away until we meet again.



Saturday 21 September The Cheshire Yeomanry

3-4pm. Free, but booking essential on 01606 271640.



Join Corey Estensen to discover the leaders, movers and shakers in the Cheshire (Earl of Chester's) Yeomanry, from Peterloo to World War Two. Find out about some of the characterful men of the county who held commissions with the Yeomanry, and their deeds. The Yeomanry are renowned as 'the last British regiment to fight on horses', and their history is full of incident and tradition.

Wednesday 25 September Nursery Rhymes

3-4pm. £3, complimentary tea & coffee from 2.30pm.

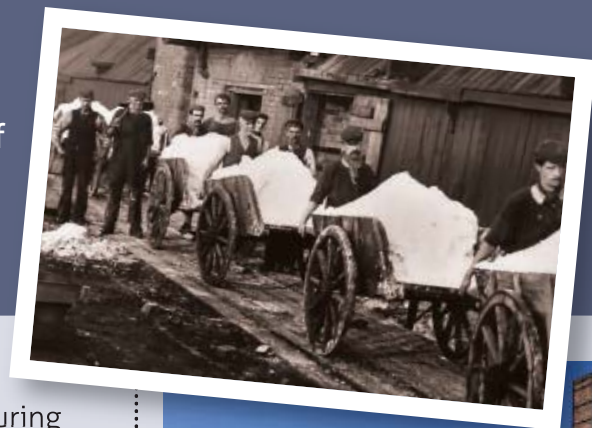
Join Phil Robinson to discover the secret of nursery rhymes, and why you will never tell your grandchildren one again!

Lion Salt Works, Northwich

Ollershaw Lane, Marston, Northwich, Cheshire, CW9 6ES

The Lion Salt Works is a restored historic open-pan salt making site in the village of Marston, beside the Trent and Mersey Canal and close to the remarkable Anderton Boat Lift. This £10 million project opened in 2015 and was voted the UK's Best Heritage project in the 2016 National Lottery Awards. It offers a fascinating journey through the life of the country's last open-pan salt works.

You can explore the site and its restored buildings to discover how the Salt Works operated and the impact of salt on mid-Cheshire's people, economy and landscape. Your visit will also set the scene for a wider exploration of the footpaths, waterways and attractions of the adjacent Northwich Woodlands and the Weaver Valley.



Admission

Adult £6.25, concession £5.50, child £4. Charges may rise during 2019. Other ticket options available. Free access to café, gift shop, butterfly garden, play area, canal towpath and car park.

Museum open Tuesday – Sunday and Bank Holiday Mondays
10.30am-5pm. Play area and butterfly garden open daily
9am-5.20pm.



General Enquiries **01606 275066**

Room Hire and Group Bookings **01606 275040**

Find us on Facebook: **Weaver Hall Museum and Lion Salt Works**

Follow us on Twitter **@cwacmuseums**

Website: **www.westcheshiremuseums.co.uk**



Support us

The Lion Salt Works Trust offers vital support including technical and historical advice, project and grounds development, visitor tours and a regular publication. To become a Saltie contact **ngkhunt21@gmail.com**.

Volunteers

Please see all West Cheshire Museums volunteering roles on the website **www.westcheshiremuseums.co.uk**.

Disabled access

Wheelchair access is available across the whole site.

Exhibitions & Family Events

Lion Salt Works, Northwich

Exhibitions

3 June – 14 July
Salt of the Earth



Industries of the past have had a big impact on the people, economy and landscape of mid-Cheshire. *Salt of the Earth* showcases seven new artworks by fine and applied art students from Warrington & Vale Royal College, which highlight and respond to different elements of the local area's industrial heritage.

23 July – 29 September
Northwich:
Then and Now



Take a trip back in time with photographs depicting the changes that have taken place in Northwich town centre over the last 100 years. Compare past and present with photographer Derek Randall, who has recreated some of these iconic images for the modern day.

Supported by Northwich Townscape Heritage Initiative

Family Events

Children's activities are aimed at 4 to 12 years unless otherwise stated. Children must be accompanied by an adult. Please contact **01606 271640** for group bookings.

There is a suggested donation or charge for most events and activities. If you would also like to go round the Lion Salt Works museum and historic core, usual admission charges apply.

Saturday 25, Sunday 26 & Monday 27 May

Live and Local presents a Bank Holiday Bonanza

11am-5pm. Free.



Family festival and fun day with outdoor stage, live music, children's activities, stalls, refreshments, hot food and much more. Enjoy the Bank Holiday at this traditional village festival with a contemporary twist, featuring local live bands throughout the day.



Tuesday 28 & Wednesday 29 May

Amaze by Science!

10.30am-12.30pm & 2-4pm, drop-in. £2.

Embrace your inner Mad Scientist! Excitement, intrigue and lots of fascinating experiments guaranteed!



Saturday 8 & Sunday 9 June
Heritage Transport Festival

10.30am-5pm. Suggested donation £2.

This evocative festival of a bygone era gives visitors an opportunity to imagine what vintage transport would have been like in its heyday.



You can enjoy a range of vehicles from the 19th and 20th centuries, including traction engines, miniature steam engines, working narrow boats, vintage cars and commercial vehicles. There is also a series of themed children's activities over the weekend.

Family Events

Lion Salt Works, Northwich

Fridays 7, 14, 21, 28 June;

5, 12, 19 July

Little Lions Explorer Club

9.30-11am. £3.

Calling all Little Lions to discover, play and create. Come and join our Early Years Explorer Club, aimed at ages 2-4 (younger siblings welcome). Loads of exciting activities, stories and popular songs. Bring your old clothes – things might get messy!



Sunday 21 July

Butterfly Bonanza

10.30am-4.30pm. Free.

The Butterfly Garden is a key part of Lion Salt Works. Join the museum and Butterfly Conservation as we celebrate all of the beautiful butterflies Cheshire has to offer. We have a series of hands-on and fun filled activities throughout the day.



Tuesday 30 & Wednesday 31 July

Lets Go and Fly a Kite

10.30am-12.30pm & 2-4pm,
drop-in. £2.



The British summer is not complete without some windy days! Get creative and have fun making your own kite, ready to fly on the breeze.

Tuesday 6 & Wednesday 7 August

Kitchen Chemistry

10.30am-12.30pm & 2-4pm,
drop-in. £2.

2019 is the international year of the Periodic Table! To celebrate, we've got some cool chemistry that you can also try at home.



Tuesday 13 & Wednesday 14

August

Pirate Adventure Day

10.30am-12.30pm & 2-4pm,
drop-in. £2.



Fancy the pirate life? Well, step on board as we sail the salty sea. There will be lots of exciting pirate-themed activities and crafts all around Lion Salt Works.

Tuesday 20 & Wednesday 21

August

Journey to Space

10.30am-12.30pm & 2-4pm,
drop-in. £2.

This year's Summer Reading Challenge is all around space. To celebrate, we've come up with some crafts that are out of this world!



Saturday 24, Sunday 25 & Monday 26 August

Live and Local presents a Bank Holiday Bonanza

11am-5pm. Free.

Family festival and fun day with outdoor stage, live music, children's activities, stalls, refreshments, hot food and much more. Enjoy the Bank Holiday at this traditional village festival with a contemporary twist, featuring local live bands throughout the day.



Family & Adult Events

Lion Salt Works, Northwich

Tuesday 27 & Wednesday 28

August

Stained Glass Windows

10.30am-12.30pm & 2-4pm,
drop-in. £2.

Stained glass windows are in old buildings all around us, but have you ever made your own? We've got a twist on the traditional materials, but it will still add some colour to your bedroom window.



Adult Events

Friday 14 June

'Twits, Wits & Bawdy Baskets' by Steve Cooper

7.30-9pm. £12, book at
www.northwichlitfest.co.uk.

A spanking new Tudor comedy about gender, identity and the north/south divide. With a cast of seven actors and the same budget as travelling vagabonds, *Twits* is a hilarious romp through a re-imagined history, using people and places which actually existed to produce a frantic farce that will provoke thought and much merriment.

A Northwich Lit Fest event



Saturday 6 July

Carving Rock Salt

10am-4pm. Free, but limited places, book at

www.pamgordonartist.co.uk/book-online/carving-rock-salt-lion-saltworks.

Led by local artist Pam Gordon, this workshop explores techniques of carving an unusual stone, halite. You will be introduced to basic stone carving techniques, learn how to use the tools, map out a design, and carve in the round. By the end of the day you will have carved a design onto a block of rock salt, and your finished sculpture will be displayed at ABDA Gallery in the town centre until 31 July.

Part of the Northwich Arts Festival



Saturday 21 September

Heritage Open Days

10.30am-5pm, drop in and book on the day. Free.



As part of Heritage Open Days, we are offering free taster tours of the unique buildings of the Lion Salt Works.

Friday 20 September

The Salt Works

Sessions: Merry Hell Acoustic

7.30-10.30pm. £12.50 (Northwich Folk Club members £11), to book email lswsessions@gmail.com or ring 07796 175437.



A band founded on the ever evolving folk tradition – music made by the people and shared by the people. Folk-rock with a great history and pedigree. Award-winning, and critically acclaimed for their song-writing, with widespread radio airplay, Merry Hell have developed a reputation as a live favourite, both at home and internationally. Merry Hell Acoustic is a slimmed-down version of the group, which enjoys the intimacy and atmosphere of small venues around the country, but still maintaining the energy and exuberance for which they are loved.

In association with Northwich Folk Club

Diary



Key

- Grosvenor Museum
- Stretton Watermill
- Weaver Hall Museum & Workhouse
- Lion Salt Works

May

- **Saturday 25**
Bank Holiday Bonanza
- **Saturday 25**
Chester Heritage Festival Launch
- **Sunday 26**
Bank Holiday Bonanza
- **Monday 27**
Bank Holiday Bonanza
- **Tuesday 28**
Amaze by Science!
- **Tuesday 28**
Silly Storybooks
- **Wednesday 29**
Pop Bottle Rockets
- **Wednesday 29**
Amaze by Science!
- **Wednesday 29**
The Terrific Triassic
- **Wednesday 29**
North Wales's Civil War
- **Wednesday 29**
Grosvenor Park Excavation Open Afternoon
- **Wednesday 29**
Congleton: A Town of Surprises
- **Thursday 30**
Pop Bottle Rockets
- **Thursday 30**
Cupcakes!
- **Thursday 30**
Café Crafts
- **Friday 31**
Craft and Chat

June

- **Friday 7**
'Quiet' Afternoon
- **Saturday 8**
Heritage Transport Festival
- **Sunday 9**
Heritage Transport Festival
- **Wednesday 12**
Wallis Simpson
- **Thursday 13**
Café Crafts
- **Friday 14**
Little Lions
- **Friday 14**
Twits, Wits & Bawdy Baskets
- **Monday 17**
Museum Explorers
- **Thursday 20**
Evening of Poetry
- **Friday 21**
Little Lions
- **Saturday 22**
River Dee Activities
- **Saturday 22**
Midsummer Watch Parades
- **Sunday 23**
Vintage Bikers
- **Sunday 23**
Midsummer Watch Parades
- **Tuesday 25**
Archaeology in Grosvenor Park
- **Wednesday 26**
Archaeology in Grosvenor Park
- **Wednesday 26**
Dementia-Friendly Museums
- **Wednesday 26**
The River Dee through the Records
- **Thursday 27**
Archaeology in Grosvenor Park
- **Thursday 27**
Café Crafts

- **Friday 28**
Chester Archaeological Society Conference
- **Friday 28**
Little Lions
- **Friday 28**
Craft and Chat
- **Saturday 29**
Chester Archaeological Society Conference
- **Saturday 29**
Chester ArchFest
- **Sunday 30**
Chester ArchFest

July

- **Thursday 4**
Evening Urban Sketch Crawl
- **Friday 5**
Little Lions
- **Friday 5**
'Quiet' Afternoon
- **Saturday 6**
Carving Rock Salt
- **Thursday 11**
Café Crafts
- **Friday 12**
Little Lions
- **Saturday 13**
Museum Family Sketch Crawl
- **Monday 15**
Museum Explorers
- **Friday 19**
Little Lions
- **Saturday 20**
Urban Sketch Crawl
- **Sunday 21**
Butterfly Bonanza
- **Thursday 25**
Festival of British Archaeology
- **Thursday 25**
Café Crafts
- **Friday 26**
Craft and Chat

Diary

● **Tuesday 30**
Lets Go and Fly a Kite

● **Tuesday 30**
Lion Masks

● **Wednesday 31**
Clay Monsters

● **Wednesday 31**
Lets Go and Fly a Kite

● **Wednesday 31**
Make a Rainbow

August

● **Thursday 1**
Clay Monsters

● **Thursday 1**
Make your own Masterpiece

● **Friday 2**
'Quiet' Afternoon

● **Tuesday 6**
Kitchen Chemistry

● **Tuesday 6**
Hobby Horses

● **Wednesday 7**
Medieval Village

● **Wednesday 7**
Kitchen Chemistry

● **Wednesday 7**
Race Day Hats

● **Thursday 8**
Medieval Village

● **Thursday 8**
Sock Horse Polo

● **Thursday 8**
Café Crafts

● **Friday 9**
Toys and Games from Times
Gobe By

● **Tuesday 13**
Pirate Adventure Day

● **Tuesday 13**
Victorian Parasols

● **Wednesday 14**
Masks

● **Wednesday 14**
Pirate Adventure Day

● **Wednesday 14**
Shiny Beetle Bags

● **Thursday 15**
Masks

● **Thursday 15**
Cuneiform Tablets

● **Tuesday 20**
Journey to Space

● **Tuesday 20**
Coats of Arms

● **Wednesday 21**
Treasure Map

● **Wednesday 21**
Journey to Space

● **Wednesday 21**
Family Photographs

● **Thursday 22**
Treasure Map

● **Thursday 22**
3D Family Tree

● **Thursday 22**
Café Crafts

● **Friday 23**
Teddy Bears Picnic

● **Saturday 24**
Bank Holiday Bonanza

● **Sunday 25**
Bank Holiday Bonanza

● **Monday 26**
Bank Holiday Bonanza

● **Tuesday 27**
Stained Glass Windows

● **Tuesday 27**
Sustainable Living

● **Wednesday 28**
Viking Finds

● **Wednesday 28**
Stained Glass Windows

● **Wednesday 28**
Miniature Gardens

● **Thursday 29**
Viking Finds

● **Thursday 29**
Rainforest Animals

● **Friday 30**
Craft and Chat

September

● **Tuesday 3**
The Constant Flux: New Thrills in
Contemporary Art

● **Thursday 5**
Café Crafts

● **Friday 6**
'Quiet' Afternoon

● **Saturday 7**
Urban Photography Workshop

● **Saturday 7**
Royal Chester Walk

● **Saturday 14**
Family Tree

● **Saturday 14**
World War II Re-enactors Day

● **Saturday 14**
Vintage Evening Dance

● **Thursday 19**
Café Crafts

● **Friday 20**
Merry Hell Acousticy

● **Saturday 21**
Heritage Open Days

● **Saturday 21**
Victorian Harvest Weekend

● **Saturday 21**
The Cheshire Yeomanry

● **Sunday 22**
Victorian Harvest Weekend

● **Wednesday 25**
Art Gallery Tour

● **Wednesday 25**
Nursery Rhymes

● **Friday 27**
Craft and Chat

Grosvenor Museum Chester History & Heritage

27 Grosvenor Street, Chester, CH1 2DD



Stretton Watermill

Mill Lane, Stretton, Farndon, SY14 7HS



Weaver Hall Museum and Workhouse

162 London Road, Northwich,
CW9 8AB



Lion Salt Works

Ollershaw Lane, Marston,
Northwich, CW9 6ES



Accessing Cheshire West and Chester Council information and services

Council information is also available in Audio, Braille and Large Print formats. If you would like a copy in any of these formats or in another language, please email us at equalities@cheshirewestandchester.gov.uk. We are also able to provide a British Sign Language (BSL) interpreter to support customers with accessing Council services.

Tel: 0300 123 8 123 Textphone: 01606 867 670
email: equalities@cheshirewestandchester.gov.uk
web: www.cheshirewestandchester.gov.uk